



Via Marche, 1/3/5
62010 Morrovalle (MC)
Italia

Tel/Fax: +39733 866585
E-mail address: info@vittorazi.com
Technical e-mail address: tecnico@vittorazi.com
Skype: vittorazi.motors
Web site: <http://www.vittorazi.com>

Electric starter wiring

To build the wiring for the electric starter and the battery recharge system, follow the logic schemes as reported in figures 1, 2, 3 and 4.

Safety information:

- The minimum cross-section of the cables that connect the battery to the starter motor must be of 5,26mm² or at least not smaller than a 10 AWG cable. Their length must never exceed 600mm.
- Both in the variant with the button only and the one with the power relay, the two components must be designed to withstand a nominal current of at least 30A at 14Vdc voltage.
- The minimum cross-section of the charging circuit cables must be 3mm²; their length must never exceed 600mm.
- Place the starter button in a position where it is not possible to be pressed accidentally. Whenever this could happen while the engine is revving higher than idle, the probability of serious damage to the electric starter system would be very high.

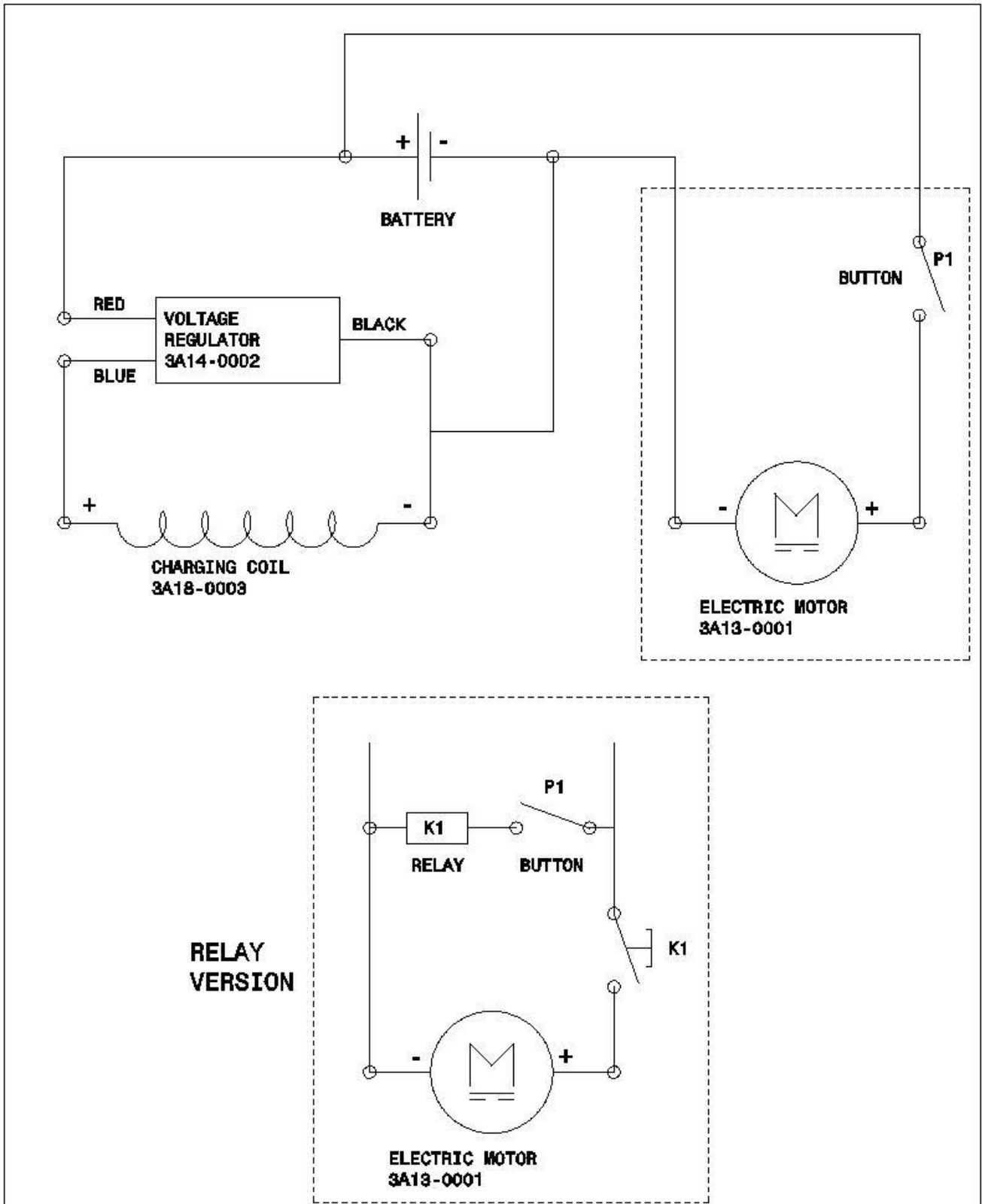
The voltage regulator is supplied with the engine.

The battery, which is not supplied along with the engine, must have a nominal voltage of 12V and a CCA (cold cranking amps) of at least 150A.

We recommend the use of the **Magneti Marelli MM-ION-2** battery supplying 12.8V and 2.4Ah.

Remember to always use a battery charger suitable for the chosen battery in order to avoid any risk of explosion due to a non-compliant charging.

Figure 1 - Wiring diagram



**RELAY
VERSION**

	Descrizione: WIRING DIAGRAM MOSTER ELECTRIC STARTER		Formato: A4	Ricavato da: -----
			Peso: XX.XXX kg	
Disegnato: TOMMASO D'AMICO	Data: 14/07/2017	Materiale: -----		
Note: Logic diagram; build according to the needs and meeting the safety requirements		Tolleranze generali -----		Finitura: -----
Disegno n°: -----	Scala: -----	Foglio: ENG	Trattamento: -----	

Figure 2 – Electric starter motor

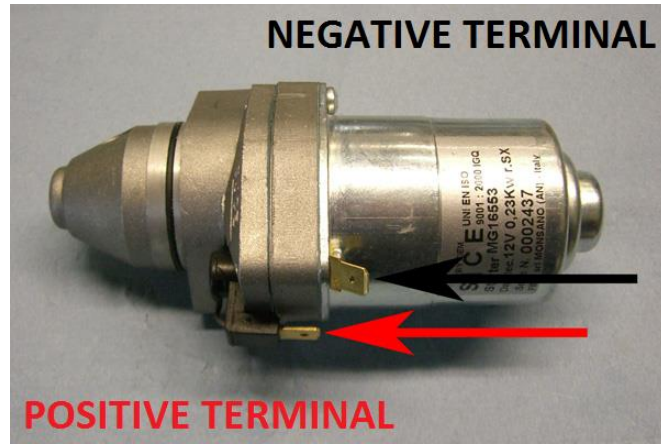


Figure 3 – Charging coil

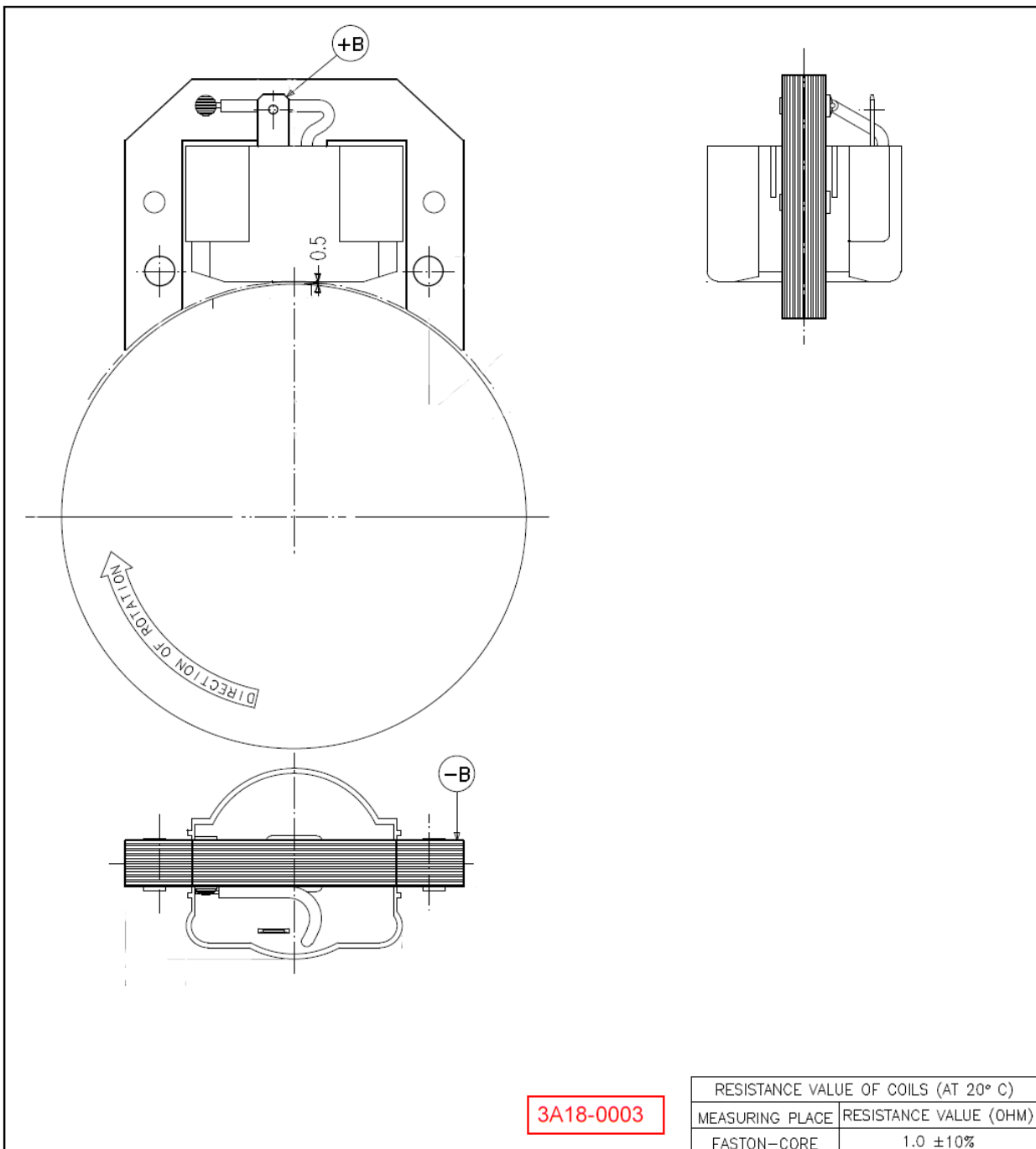
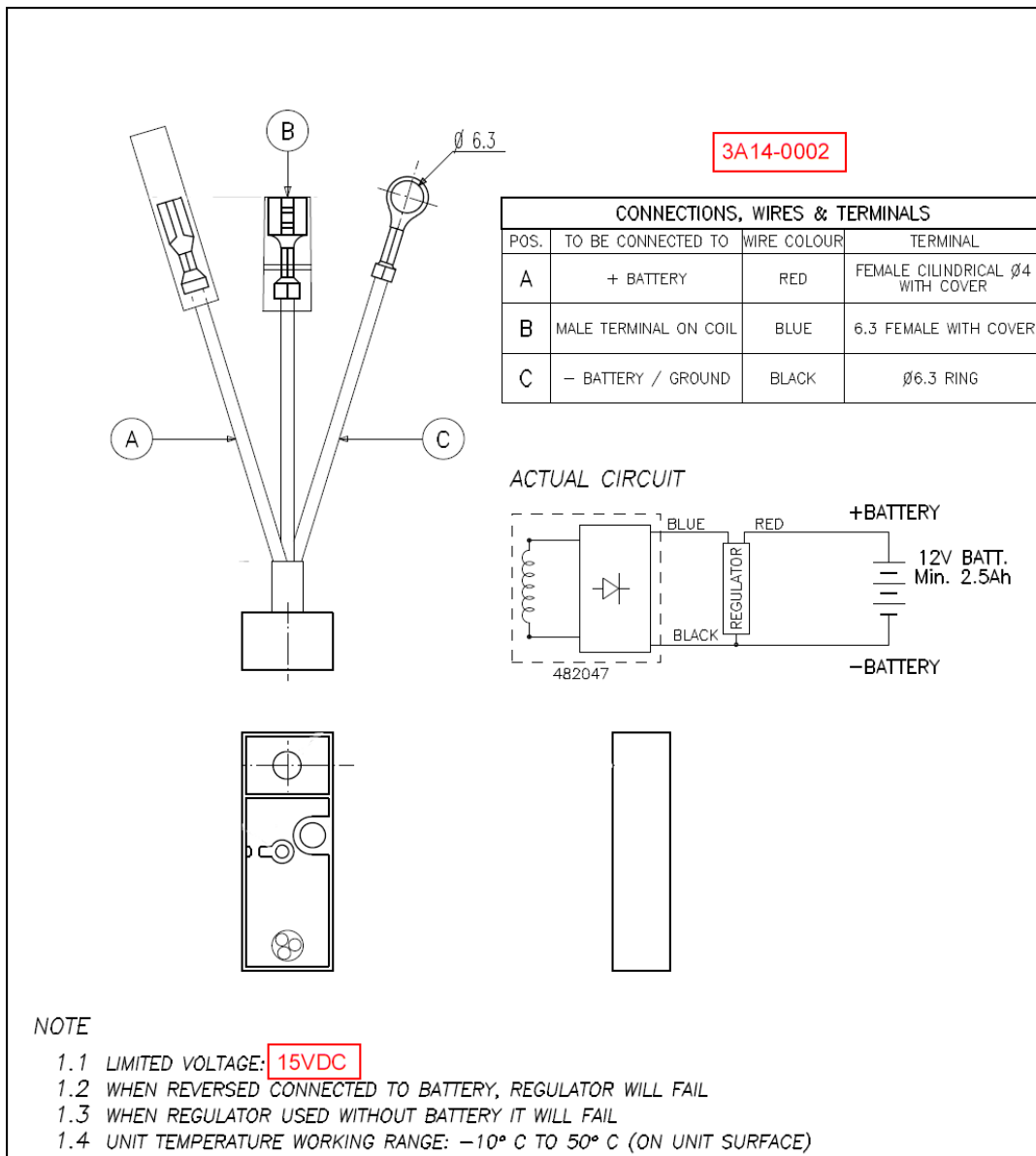


Figure 4 – Voltage regulator



Contact

For questions, claims, doubts or any problems related to the operating system of the motor, please do not hesitate to contact us. We will always be ready to help.



Registered office: via Roma, 182. Montecosaro 62010 (MC). Italia

Headquarter: via Marche 1. Morrovalle 62010 (MC). Italia

Tel/Fax: +39733 866585

E-mail address: info@vittorazi.com

Technical e-mail address: matteo@vittorazi.com

Skype: vittorazi.motors

Web site: <http://www.vittorazi.com>