

SERVICE BULLETIN – ATOM80

Exhaust support plate



MANDATORY

1. *Applicability*

Engine affected

Engine model	Production period / Serial number
Atom80	All engines before MY20 version

2. *Reason*

It has been found on some engines that the exhaust plate code AT186 has broken after hours of operation. The plate has been reinforced: the geometry has been changed and the thickness has been increased to give greater resistance. Material and fastening are unchanged.

3. *Compliance*

- Immediately, on undelivered engines.
- Before next flight, on the engine affected to avoid unusual engine operating behavior.

4. *Subject*

Instructions for proper installation of the exhaust plate. See the instructions at the end of this document.

5. *Labor time*

Estimated labor: 20 minutes to install the support plate.

6. *Mass data*

Change of weight: +12 grams, thicker support plate.

SERVICE BULLETIN – ATOM80

Exhaust support plate



7. References

In addition to this technical information refer to current issue of:

- Engine user Manual
- Illustrated Parts Catalog

8. Material

Price and availability will be provided on request by VITTORAZI authorized dealer or Service Centers. Material requirement per engine:

Code / Art.	Quant.	Description	Cost of the material FOB
AT186	1	Exhaust support plate	Free upgrade for engines affected

9. Rework of parts

Weld filings may be required in the area of contact with the plate.

10. Special tooling

None.

11. Warning, caution, more attention

- Correct alignment of the exhaust releases less stress to the support plate.
- Use Vittorazi approved propellers and in optimal conditions of balance and aerodynamic profile to reduce abnormal vibrations.

12. Accomplishment and Test Run

The work must be implemented and confirmed by at least one of the following persons:

- VITTORAZI MOTORS representatives;
- VITTORAZI MOTORS authorized Distributors, Service Centre, Aircraft manufacture.

At the end of the work to ensure the correct operation of the service a ground test is required and then a further approval in flight.


13. Inquires

Inquiries regarding this Service Bulletin should be sent to the VITTORAZI authorized Distributors, Service Centre, Aircraft manufacture of your area. A list of all VITTORAZI representatives is provided on the Vittorazi website (vittorazi.com).

SERVICE BULLETIN – ATOM80

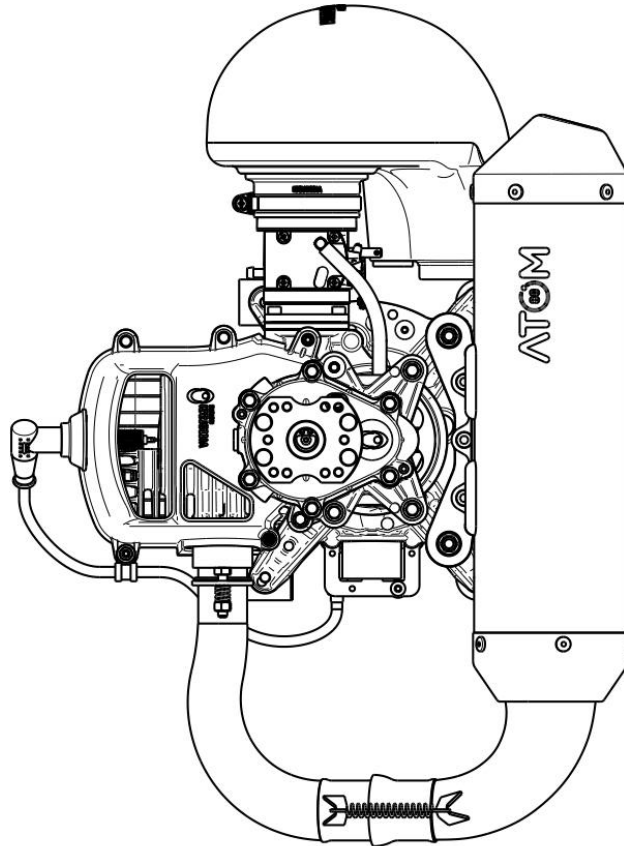
Exhaust support plate

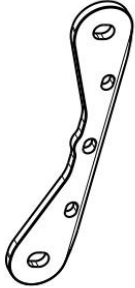
1P04-0021_01 - Assembly procedure for exhaust support bracket

**VITTORAZI**
MOTORS

Vittorazi Motors
Via Marche 1 - 62010 Morrovalle (MC) - Italy
Tel./Fax +39.0733.866585 Email: info@vittorazi.com

CODE: AT186



COMPONENTS	Q.TY
	1
Screw M6x16	3
Nut M6	3
Nut M8	2

NOT FOR SALE

SERVICE BULLETIN – ATOM80

Exhaust support plate

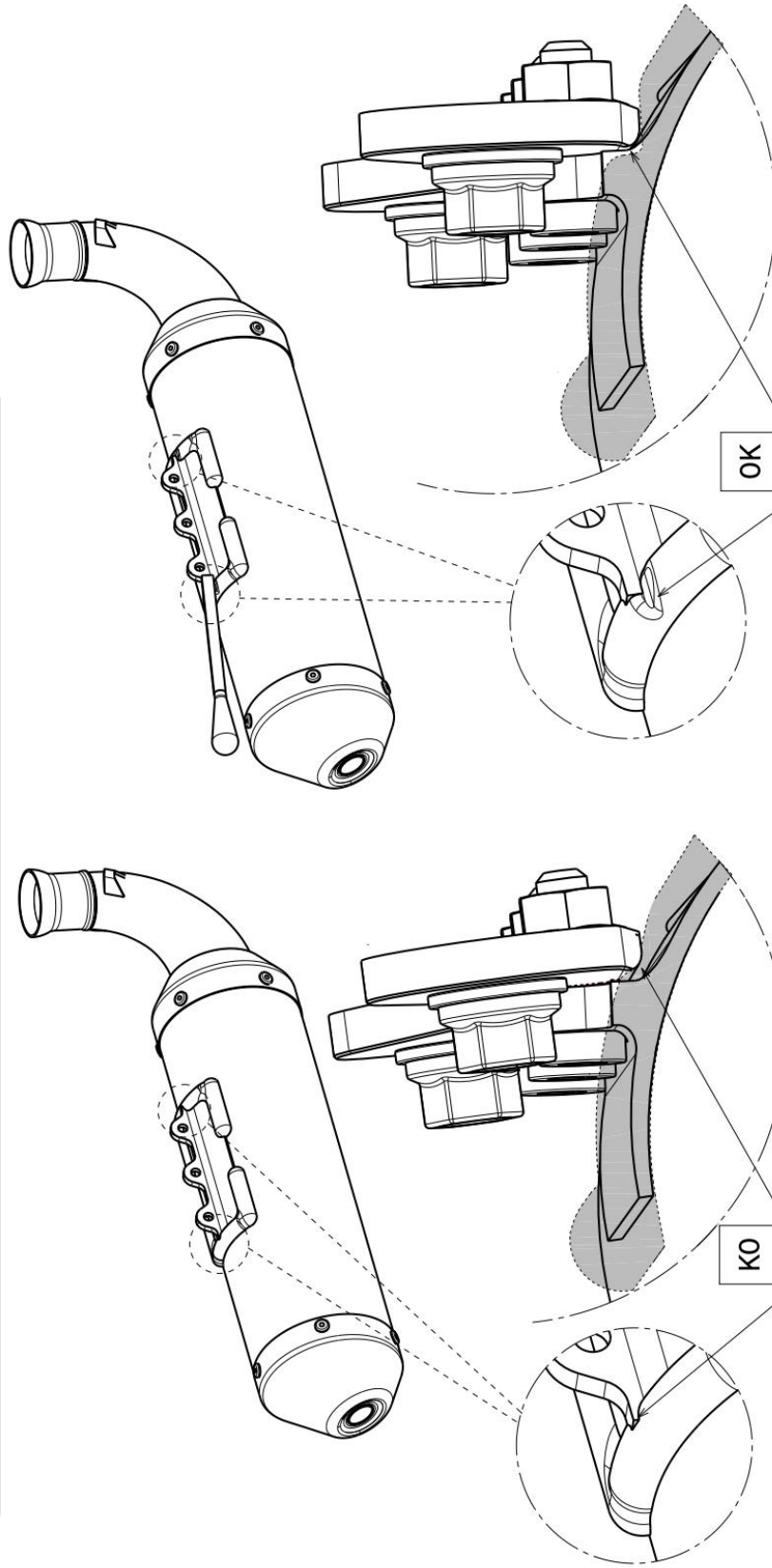
1P04-0021_01 - Assembly procedure for exhaust support bracket



Vittorazi Motors
Via Marche 1 - 62010 Morrovalle (MC) - Italy
Tel./Fax +39.0733.866585 Email: info@vittorazi.com

1.

Check the welding in the indicated areas.
If you notice interference between the plate and the welding,
remove the weld excess with a file.




- No contact between plate and welding
- No gap between plates

- Interference between plate and welding
- Imperfect contact or gap between plates

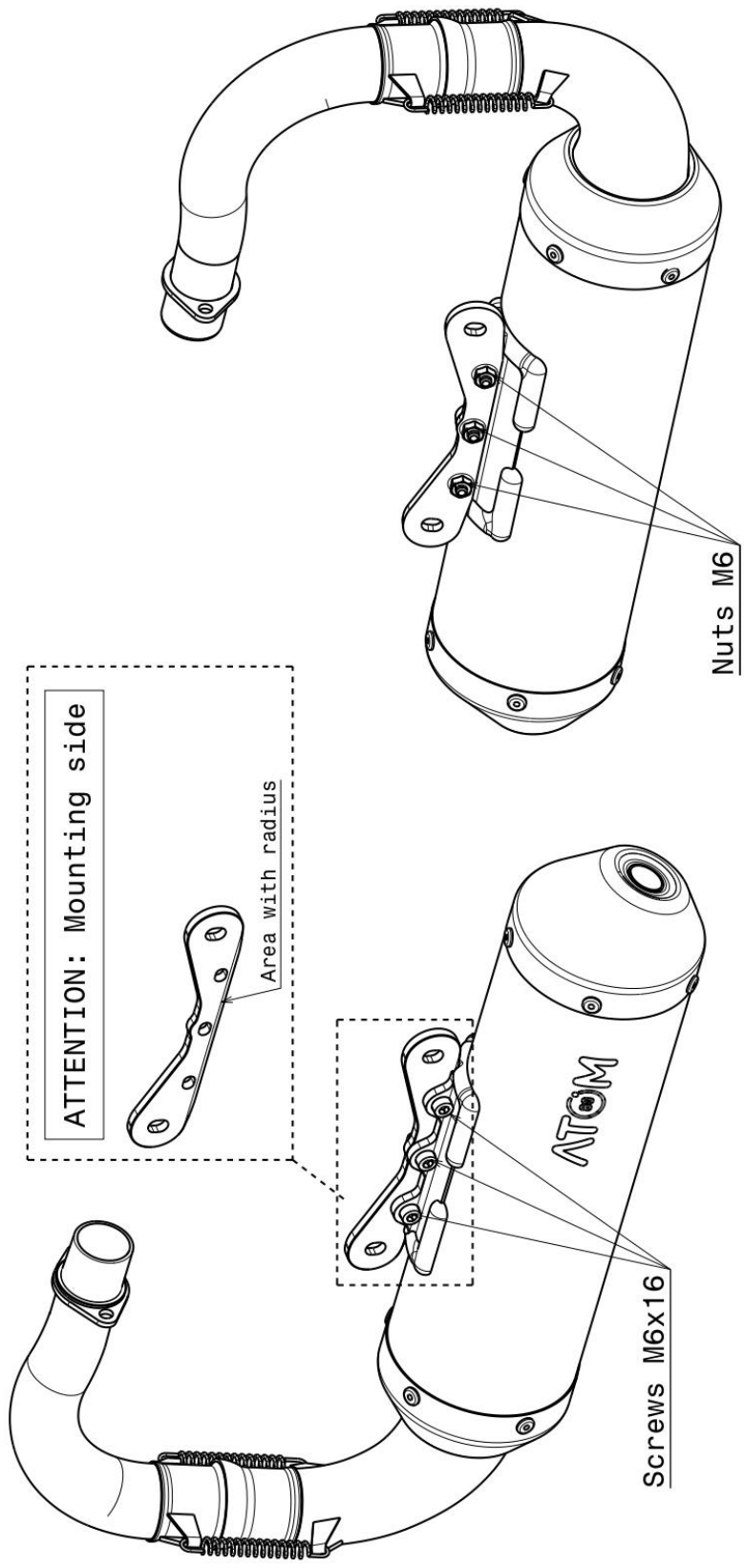
SERVICE BULLETIN – ATOM80

Exhaust support plate

1P04-0021_01 - Assembly procedure for exhaust support bracket
 Vittorazi Motors Via Marche 1 - 62010 Morrovalle (MC) - Italy Tel./Fax +39.0733.866585 Email: info@vittorazi.com

2. Pre-assemble plate without tightening the screws and nuts.


- IMPORTANT:**
- use new nuts and screws provided with the kit
 - pay attention at the mounting side of the plate



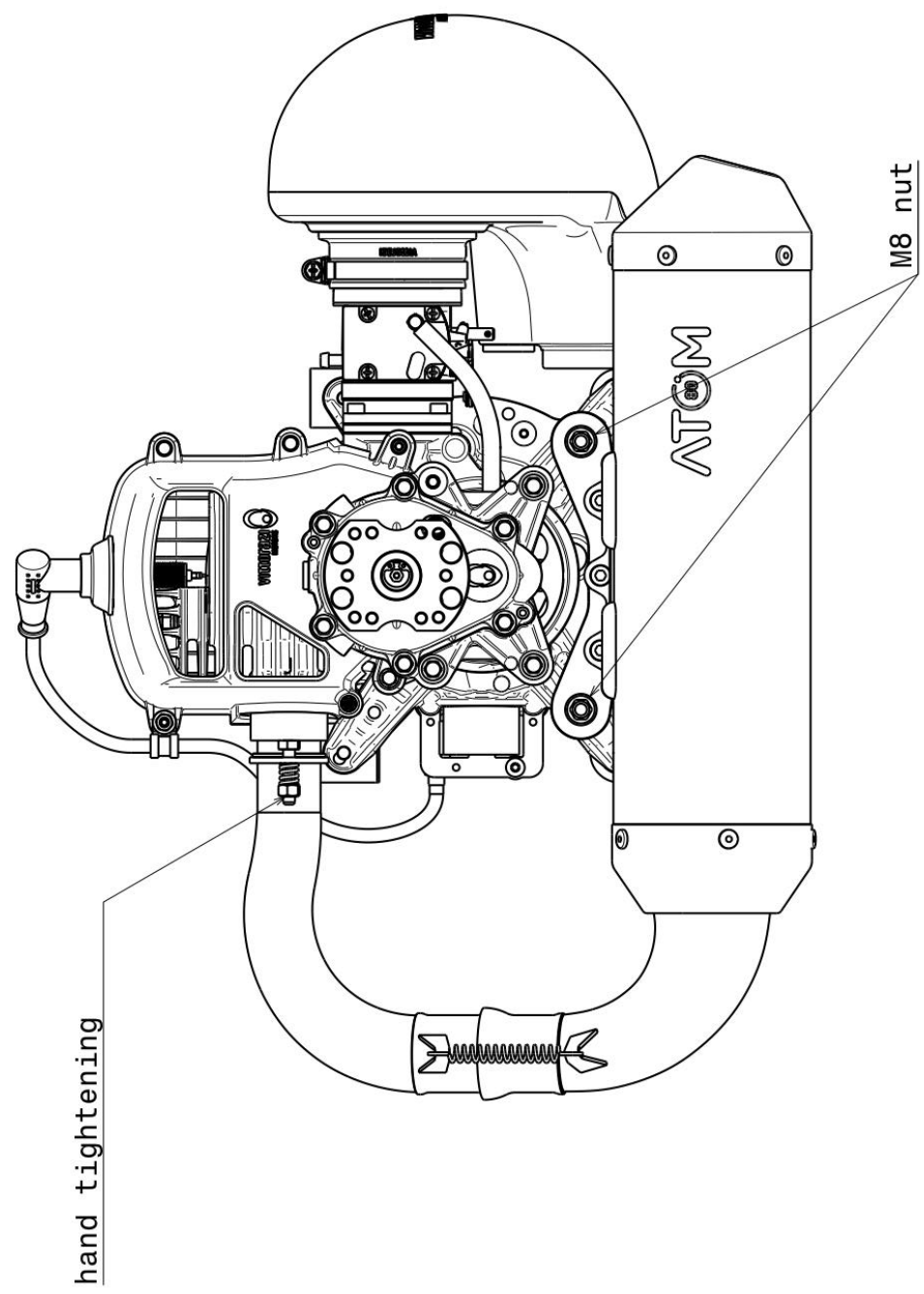
SERVICE BULLETIN – ATOM80

Exhaust support plate



1P04-0021_01 - Assembly procedure for exhaust support bracket
 Vittorazi Motors Via Marche 1 - 62010 Morrovalle (MC) - Italy Tel./Fax +39.0733.866595 Email: info@vittorazi.com

3. Position the exhaust on the engine.
Screw in M8 nuts without tightening



SERVICE BULLETIN – ATOM80

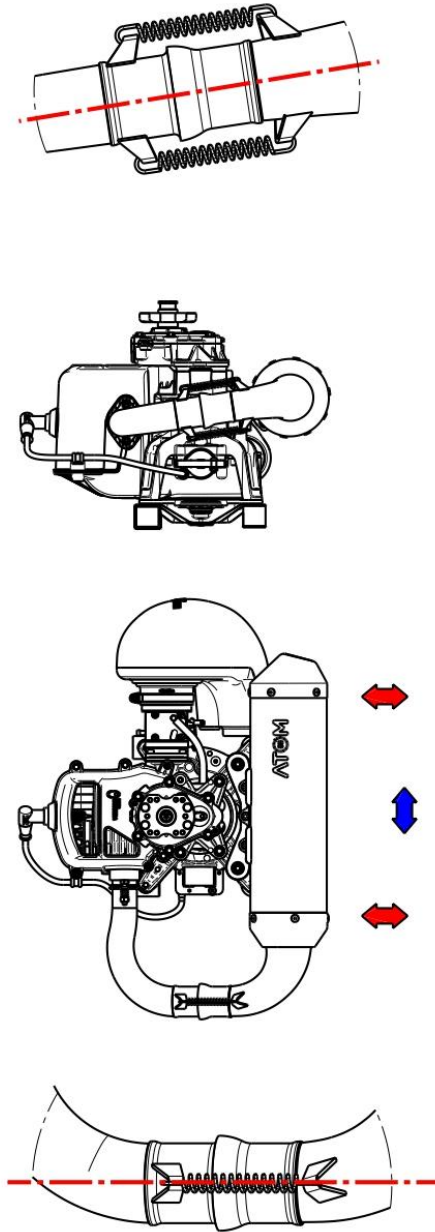
Exhaust support plate

1P04-0021_01 - Assembly procedure for exhaust support bracket

vittorazi
MOTORS

Vittorazi Motors
Via Marche 1 - 62010 Morrovalle (MC) - Italy
Tel./Fax +39.0733.866585 Email: info@vittorazi.com

4. Check that the exhaust joint is well aligned



5. When the joint is aligned tighten screws and nuts

