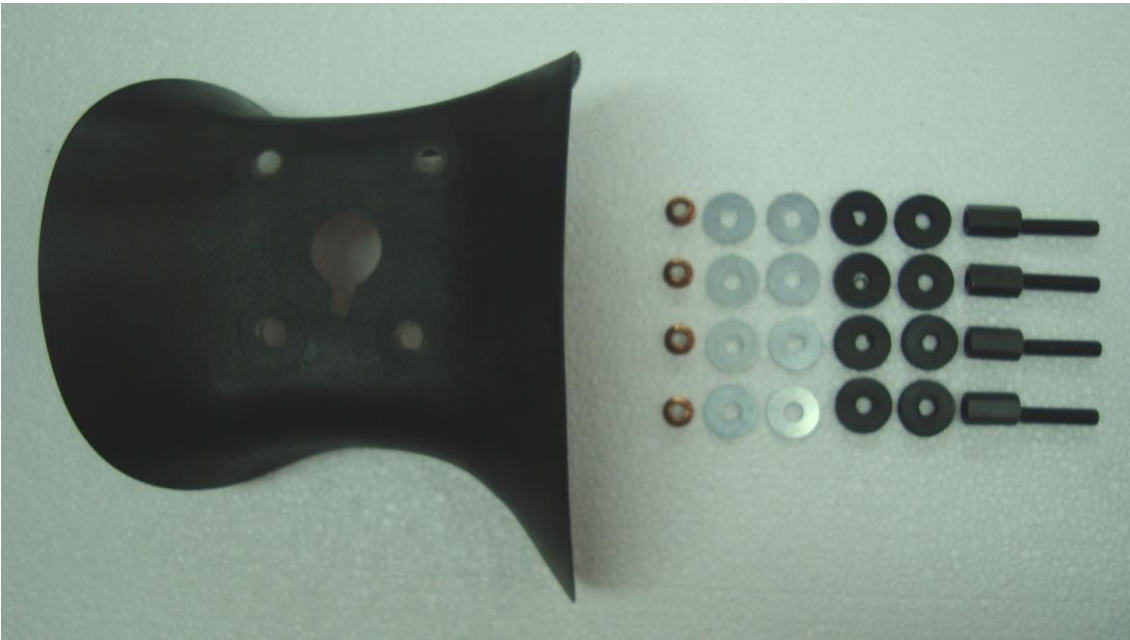


## INSTALLATION OF THE AIR CONVEYOR

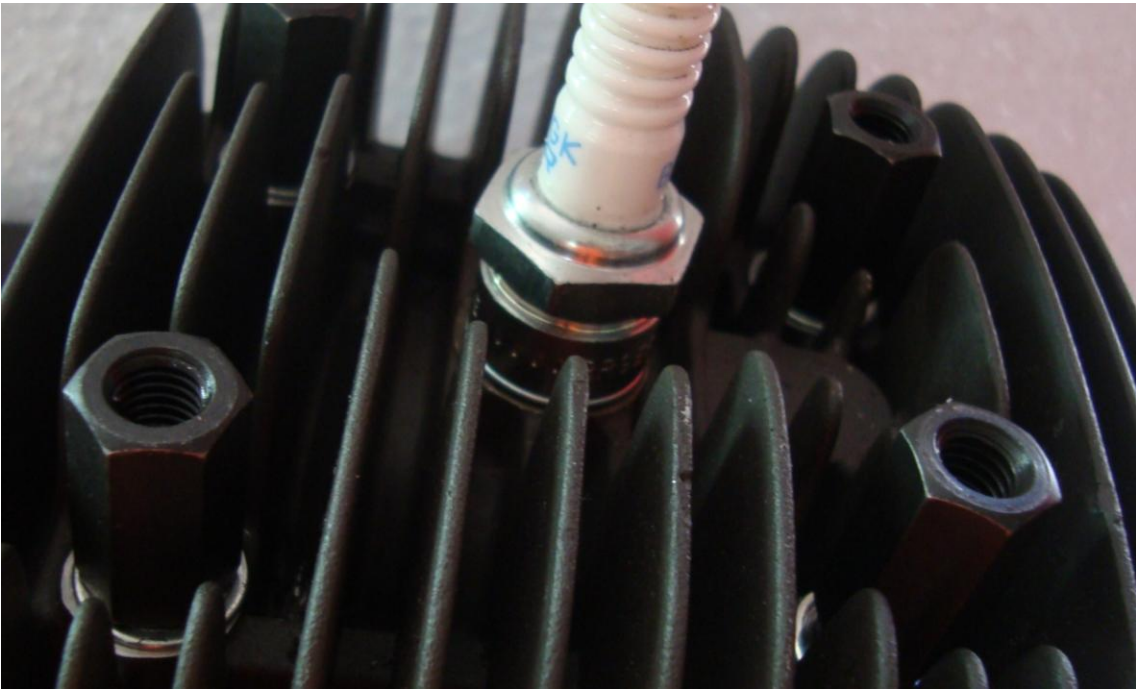
### COMPONENTS



1 – REMOVE THE 4 BOLTS OF THE CYLINDER HEAD, MAINTAINING THE WASHERS



2 – INSTALL THE 4 SPECIAL BOLTS AS SHOWN IN THE PICTURE



3 - FASTEN THE SPECIAL BOLTS USING A TORQUE WRENCH ADJUSTED TO 16 NM



4 – APPLY ON EACH STUD A SMALL QUANTITY OF GLUE FOR THREAD (LIGHT TYPE, FOR EXAMPLE LOCTITE BLUE)

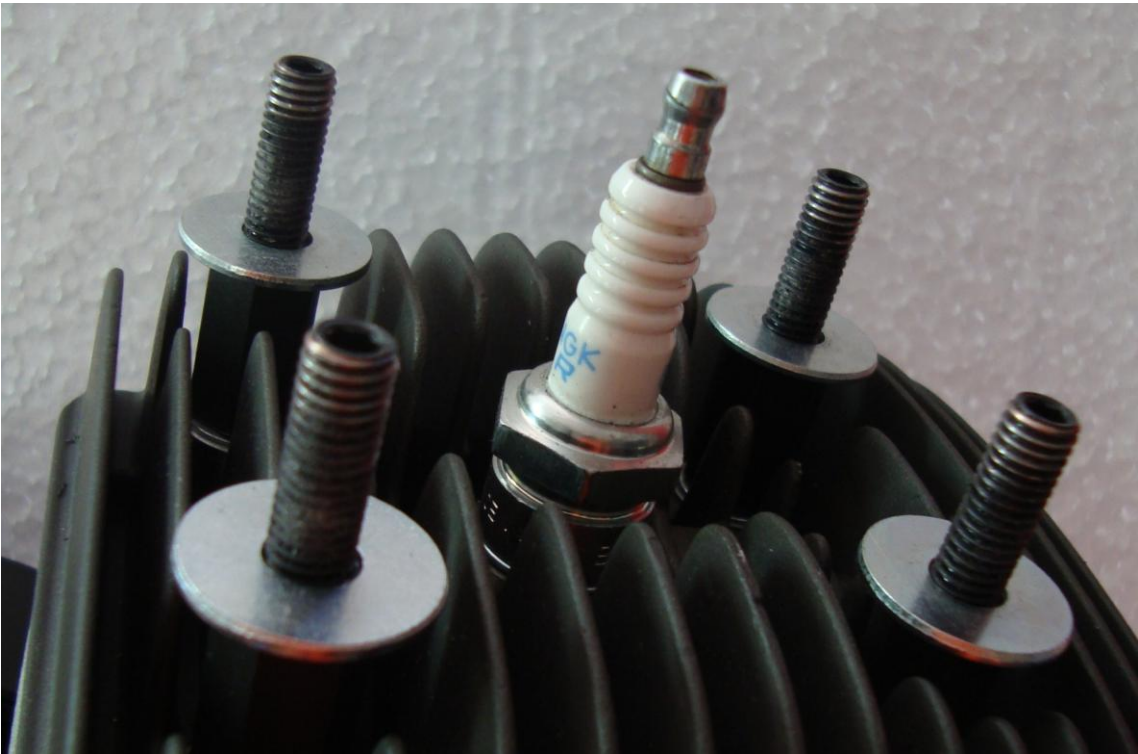


5 – FASTEN THE STUDS

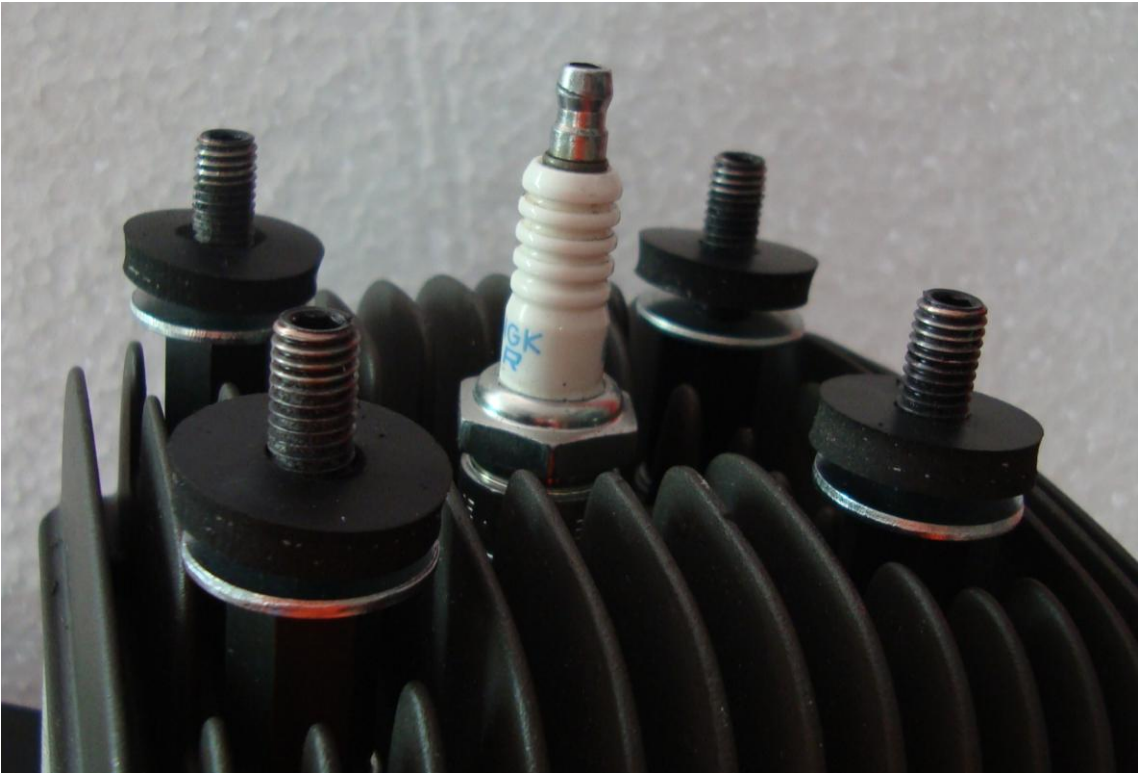




6 – APPLY THE WASHERS



7 – APPLY THE RUBBER SPACERS



8 – INSTALL THE AIR CONVEYOR



9 - APPLY THE RUBBER SPACERS



10 – APPLY WASHERS AND BOLTS



11 – FASTEN THE BOLTS (DO NOT USE AN EXCESSIVE TORQUE)